

Financial Data Book

Q4 2025

From April 1, 2025 to March 31, 2026

最終更新日

2026年5月15日

伊藤ハム米久ホールディングス株式会社

I R 室

Last Updated

May 15, 2026

ITOHAM YONEKYU HOLDINGS Inc.

Investor Relations Office

● 連結財務諸表	Consolidated Financial Statements	
(1) 連結貸借対照表	Consolidated Balance Sheets	: 3
(2) 連結損益計算書	Consolidated Statements of Income	: 4
(3) 連結キャッシュフロー計算書	Consolidated Statements of Cash Flows	: 5
(4) 設備投資額・減価償却費・研究開発費	Capital investment, Depreciation, R&D expenditures	: 5
● 主要連結財務指標	Main Consolidated Financial Indicators	
(1) 収益性	Profitability	: 6
(2) リターン	Return	: 6
(3) 効率性	Efficiency	: 6
(4) 安全性および流動性	Stability and Liquidity	: 7
(5) 投資 Investment	Investment	: 7
● セグメント情報	Segment Information	
(1) 事業別売上高及び営業利益、経常利益	Net sales and Operating profit and Ordinary profit by division	: 8
(2) 商品別売上高	Net sales by products	: 9
(3) 国・地域別売上高	Net sales by country and region	: 10
● 株式情報	Stock Information	
(1) 株式概況	Stock Overview	: 11
(2) 大株主	Major shareholders	: 11
(3) 株式分布	Stock distribution	: 11
(4) 株価および出来高	Stock price and trading volume	: 12
● 市場シェア	Market Share	
(1) 主要商品国内市場シェア	Market share of Main products in Japan	: 13

注記 Note

- 財務情報は、いずれも日本基準で開示した数値です。
The financial information disclosed by Japanese GAAP.
- 年度の表記は日本基準での表記です。(例: 「2025年度」及び「FY2025」は、2025年4月1日から2026年3月31日までの会計期間を示しています。)
The notation of the fiscal year is based on Japanese standards.
Example: FY2025 shows from April 1, 2025 to March 31, 2026.
- 2021年度より「収益認識に関する会計基準」等を適用しています。
特に記載のない限り、連結およびセグメント計の数値は2021年度以降は当該基準適用後、2020年度以前は当該基準適用前のものです。
The Accounting Standard for Revenue Recognition is applied from beginning of FY2021.

(1) 連結貸借対照表 Consolidated Balance Sheets

		百万円 Million yen									
		FY2016	FY2017	FY2018	FY2019	FY2020	FY2021	FY2022	FY2023	FY2024	FY2025
総資産 Total assets	Q1	366,825	366,568	392,141	406,636	389,845	414,856	433,421	464,199	486,302	485,799
	Q2	360,147	378,365	394,954	384,582	383,913	405,147	449,932	479,173	479,312	475,315
	Q3	376,439	385,139	398,280	395,657	393,508	416,921	476,747	483,761	503,646	549,526
	Q4	373,632	378,687	393,392	389,426	394,086	413,123	436,763	462,570	467,009	524,726
流動資産 Current assets	Q1	216,440	209,991	227,866	244,534	230,258	246,969	261,495	281,440	297,629	295,238
	Q2	211,621	218,841	228,376	222,424	221,206	236,967	268,885	293,609	287,231	280,702
	Q3	223,129	223,957	231,716	233,844	229,193	250,183	297,398	296,340	306,648	339,231
	Q4	215,349	216,705	229,580	226,498	226,384	243,405	256,463	272,036	277,227	311,427
現金及び預金 Cash and deposits	Q1	41,659	33,467	28,647	33,145	37,497	46,391	35,312	23,974	23,860	19,633
	Q2	41,913	26,220	20,445	32,830	39,360	29,352	20,659	25,189	20,826	17,569
	Q3	33,068	16,414	16,556	18,176	21,492	20,208	23,183	23,151	18,702	21,605
	Q4	53,087	29,585	34,944	42,072	50,952	47,991	22,736	23,225	20,989	17,980
受取手形及び売掛金 Notes and accounts receivable-trade	Q1	82,599	87,401	101,097	101,727	87,421	85,952	90,837	98,280	116,012	109,067
	Q2	80,380	100,177	102,742	87,491	84,207	89,506	98,385	113,150	101,995	101,845
	Q3	116,197	121,801	121,873	124,179	123,141	126,222	134,161	138,444	139,633	150,989
	Q4	78,559	94,056	98,769	87,902	86,591	89,008	95,323	110,986	103,224	112,258
棚卸資産 Inventories	Q1	74,710	81,006	90,655	100,796	95,889	100,677	117,088	141,202	145,255	157,987
	Q2	72,681	85,782	99,146	95,148	89,830	106,270	132,510	142,510	153,792	153,165
	Q3	68,320	79,908	88,844	85,653	80,073	92,825	124,888	124,404	138,128	157,319
	Q4	75,956	86,274	88,908	90,243	82,233	95,565	122,742	125,472	143,368	172,143
固定資産 Non-current assets	Q1	150,385	156,576	164,275	162,102	159,587	167,886	171,926	182,759	188,673	190,561
	Q2	148,526	159,523	166,577	162,158	162,707	168,179	181,046	185,584	192,080	194,612
	Q3	153,309	161,181	166,564	161,813	164,314	166,737	179,348	187,420	196,995	210,294
	Q4	158,283	161,982	163,812	162,927	167,702	169,717	180,299	190,534	189,782	213,298
有形固定資産 Property, plants and equipment	Q1	83,124	85,536	93,141	99,171	95,314	97,998	99,404	102,196	104,120	109,026
	Q2	82,593	87,231	95,046	98,625	96,770	97,566	101,636	103,071	106,203	110,636
	Q3	83,544	87,623	97,983	97,380	96,483	96,210	100,417	104,953	109,847	118,061
	Q4	86,079	89,735	98,747	98,760	97,595	97,000	101,472	105,265	109,668	121,875
無形固定資産 Intangible assets	Q1	28,861	27,186	25,405	23,800	22,427	21,775	22,457	26,861	25,576	25,051
	Q2	28,466	26,825	24,911	23,386	22,174	21,888	26,695	26,807	25,880	25,145
	Q3	28,066	26,307	24,450	23,059	22,959	22,030	26,596	26,607	25,853	25,880
	Q4	27,631	25,816	24,199	22,684	21,724	22,114	26,842	25,210	25,469	26,026
投資有価証券 Investment securities	Q1	29,078	32,316	30,257	23,093	26,148	28,885	28,909	31,654	33,271	34,571
	Q2	28,245	33,582	31,127	23,848	27,001	29,255	30,893	32,065	33,687	36,476
	Q3	32,336	34,917	28,602	25,609	28,622	29,011	30,458	31,867	34,947	43,728
	Q4	32,970	31,618	24,912	25,822	29,331	29,598	30,302	34,699	33,322	39,701
負債合計 Total liabilities	Q1	166,312	149,942	174,252	185,084	163,250	166,986	170,480	196,213	204,041	197,350
	Q2	156,446	157,286	172,692	159,802	149,100	151,464	180,530	203,750	191,717	187,634
	Q3	162,080	165,259	173,109	165,790	149,995	157,532	204,561	201,245	215,776	251,965
	Q4	153,598	158,826	169,317	160,247	146,438	150,383	167,501	177,244	180,691	229,217
流動負債 Current liabilities	Q1	135,544	119,143	144,954	153,715	140,410	142,281	145,037	179,930	187,545	159,306
	Q2	123,308	126,193	146,716	127,800	125,854	127,529	154,948	188,276	174,736	149,579
	Q3	130,901	136,246	151,650	142,899	126,542	133,390	179,455	185,406	197,959	201,193
	Q4	121,294	127,808	139,456	138,106	123,041	126,533	152,941	161,234	144,439	181,418
支払手形及び買掛金 Current liabilities	Q1	64,679	62,498	70,781	72,751	64,350	69,137	72,204	82,984	86,542	75,675
	Q2	63,368	69,197	73,828	64,070	59,561	67,370	74,678	81,030	74,040	70,954
	Q3	70,002	70,983	72,135	72,030	67,730	72,881	80,610	76,363	78,931	82,856
	Q4	61,530	65,582	64,833	63,323	58,276	64,098	68,969	75,177	66,229	74,818
固定負債 Notes and accounts payable - trade	Q1	30,768	30,798	29,297	31,368	22,840	24,705	25,442	16,282	16,495	38,043
	Q2	33,138	31,093	25,975	32,002	23,246	23,935	25,581	15,473	16,980	38,054
	Q3	31,178	29,012	21,459	22,890	23,452	24,141	25,106	15,838	17,817	50,772
	Q4	32,304	31,017	29,861	22,140	23,396	23,849	14,560	16,010	36,252	47,799
純資産 Net assets	Q1	200,512	216,626	217,889	221,552	226,595	247,869	262,941	267,986	282,260	288,449
	Q2	203,700	221,078	222,262	224,780	234,812	253,682	269,401	275,422	287,594	287,681
	Q3	214,359	219,880	225,170	229,867	243,512	259,388	272,185	282,516	287,867	297,560
	Q4	220,033	219,861	224,074	229,178	247,648	262,740	269,261	285,326	286,318	295,509
自己資本 ^{*1} Equity capital ^{*1}	Q1	193,668	209,501	217,014	220,247	225,187	247,165	262,300	267,347	281,593	287,751
	Q2	196,805	213,427	220,996	223,434	234,109	252,990	268,758	274,755	286,886	286,978
	Q3	207,476	218,627	223,861	228,489	242,814	258,704	271,536	281,828	287,133	296,839
	Q4	212,519	218,612	222,765	227,772	246,931	262,023	268,608	284,616	285,542	294,743
有利子負債 Interest bearing debt	Q1	64,347	47,288	52,220	64,576	50,361	43,515	40,775	56,721	61,223	67,214
	Q2	59,489	49,816	56,379	57,753	46,572	40,335	53,814	70,366	68,293	65,239
	Q3	49,730	51,429	58,798	47,041	31,423	33,930	63,927	68,347	80,841	106,377
	Q4	52,785	48,151	62,144	52,955	39,583	37,851	45,674	43,364	62,545	92,322

*1 自己資本 = 株主資本 + その他の包括利益累計額

Equity Capital = Shareholders' equity + Accumulated other comprehensive income

(2) 連結損益計算書 Consolidated Statements of Income

		百万円 Million yen									
		FY2016	FY2017	FY2018	FY2019	FY2020	FY2021 ²	FY2022 ²	FY2023 ²	FY2024 ²	FY2025 ^{2,3}
売上高 Net sales	Q1	196,532	201,879	208,615	210,964	204,992	202,607	212,325	227,558	235,771	297,110
	Q2	202,345	214,758	217,809	221,436	209,630	215,154	235,678	242,583	255,142	245,251
	Q3	213,533	226,295	232,611	228,500	232,204	237,945	253,592	258,078	267,567	277,654
	Q4	180,153	188,932	191,684	191,548	195,847	198,666	221,085	227,360	230,289	251,364
	Full Year	792,564	831,865	850,721	852,450	842,675	854,374	922,682	955,580	988,771	1,071,381
売上原価 Cost of Sales	Q1	166,405	170,299	178,144	178,826	172,825	169,114	179,615	195,353	203,643	256,595
	Q2	169,619	181,229	185,281	187,687	173,506	181,469	200,781	209,825	221,521	212,882
	Q3	174,347	188,011	193,584	188,664	190,064	200,329	216,036	218,173	228,874	238,446
	Q4	153,980	161,675	166,890	163,723	166,299	171,557	196,123	199,672	201,459	216,977
	Full Year	664,352	701,215	723,900	718,902	702,695	722,470	792,556	823,025	855,499	924,902
売上総利益 Gross profit	Q1	30,127	31,579	30,471	32,138	32,166	33,493	32,710	32,204	32,127	40,515
	Q2	32,726	33,529	32,528	33,748	36,124	33,684	34,897	32,757	33,621	32,368
	Q3	39,186	38,284	39,026	39,836	42,140	37,616	37,555	39,904	38,693	39,207
	Q4	26,172	27,256	24,794	27,824	29,548	27,108	24,962	27,688	28,829	34,386
	Full Year	128,212	130,649	126,821	133,548	139,979	131,904	130,126	132,554	133,272	146,478
販売費及び一般管理費 Selling, general and administrative expenses	Q1	25,601	26,184	26,816	27,366	27,137	25,939	25,596	26,892	28,198	31,403
	Q2	26,740	27,489	28,234	29,149	28,527	26,759	26,873	27,488	28,744	28,331
	Q3	30,249	31,015	32,202	32,528	32,594	28,961	28,776	29,757	30,327	30,564
	Q4	24,165	24,397	25,073	27,236	27,702	25,632	25,885	26,080	26,426	27,723
	Full Year	106,756	109,087	112,326	116,281	115,961	107,292	107,131	110,218	113,695	118,022
人件費 Labor cost	Q1	9,021	9,254	9,042	8,773	8,779	8,753	8,945	9,046	9,143	10,434
	Q2	9,109	9,278	8,642	8,865	8,753	8,768	8,945	9,077	9,143	8,991
	Q3	9,427	9,213	9,251	8,838	9,210	8,981	9,021	9,265	9,066	9,444
	Q4	8,384	8,582	8,579	9,020	9,095	8,862	9,290	9,196	8,801	9,658
	Full Year	35,943	36,329	35,515	35,498	35,839	35,366	36,108	36,585	36,340	38,528
物流費 Logistics cost	Q1	7,643	7,977	8,779	10,131	10,678	10,753	10,496	11,222	12,092	13,273
	Q2	8,063	8,395	9,316	10,654	11,056	11,193	11,217	11,776	12,823	12,523
	Q3	8,990	9,713	11,440	11,933	12,404	12,363	12,539	13,085	13,887	13,955
	Q4	7,516	7,977	8,878	10,051	10,296	10,313	10,351	11,165	11,556	11,968
	Full Year	32,214	34,063	38,415	42,770	44,436	44,623	44,603	47,249	50,359	51,720
広告宣伝費 Advertising expenses	Q1	1,747	1,919	1,791	1,768	1,495	1,051	1,130	1,122	1,226	1,397
	Q2	1,680	1,918	1,824	2,104	1,591	1,069	1,117	1,141	1,067	1,334
	Q3	2,189	2,163	2,240	2,344	2,125	1,494	1,350	1,367	1,470	1,304
	Q4	1,443	1,525	1,476	1,749	1,678	867	929	1,047	807	944
	Full Year	7,060	7,526	7,332	7,968	6,891	4,483	4,528	4,679	4,572	4,981
営業利益 Operating profit	Q1	4,526	5,394	3,654	4,772	5,028	7,554	7,114	5,311	3,929	9,112
	Q2	5,986	6,039	4,294	4,598	7,597	6,925	8,023	5,268	4,877	4,037
	Q3	8,937	7,268	6,824	7,307	9,546	8,655	8,778	10,147	8,366	8,642
	Q4	2,006	2,859	-279	587	1,845	1,476	-923	1,608	2,403	6,663
	Full Year	21,455	21,562	14,494	17,266	24,018	24,611	22,994	22,336	19,576	28,456
営業外損益 Non-operating income and expenses	Q1	590	436	469	453	487	870	584	288	439	48
	Q2	854	681	187	471	431	1,189	438	1,429	-209	437
	Q3	1,655	731	414	964	1,070	1,600	1,071	955	588	1,083
	Q4	1,782	1,011	113	378	993	323	955	1,026	354	367
	Full Year	4,882	2,861	1,184	2,267	2,982	3,984	3,050	3,700	1,174	1,938
経常利益 Ordinary profit	Q1	5,116	5,830	4,124	5,225	5,516	8,425	7,698	5,600	4,369	9,161
	Q2	6,840	6,721	4,481	5,070	8,028	8,115	8,462	6,697	4,668	4,475
	Q3	10,592	8,000	7,239	8,271	10,617	10,255	9,850	11,103	8,955	9,726
	Q4	2,335	3,871	-165	966	2,838	1,799	32	2,634	2,758	7,031
	Full Year	24,884	24,423	15,679	19,534	27,000	28,596	26,044	26,036	20,750	30,395
特別損益 Extraordinary income and losses	Q1	1,793	-34	657	66	-47	42	-54	-274	14	-17
	Q2	165	238	-62	2	2,513	305	-67	-350	65	129
	Q3	95	450	27	-1,346	-132	-316	-71	83	-27	-150
	Q4	-911	-210	1	-976	-220	-413	-886	-2,981	-1,549	-798
	Full Year	1,142	444	624	-2,254	2,113	-382	-1,080	-3,522	-1,497	-836
税金等調整前当期純利益 Profit before income taxes	Q1	6,910	5,796	4,782	5,291	5,468	8,467	7,643	5,326	4,383	9,143
	Q2	7,006	6,960	4,419	5,073	10,541	8,420	8,394	6,347	4,733	4,605
	Q3	10,687	8,450	7,267	6,924	10,484	9,938	9,779	11,186	8,927	9,576
	Q4	1,423	3,660	-164	-10	2,618	1,386	-854	-346	1,208	6,232
	Full Year	26,027	24,867	16,304	17,280	29,113	28,213	24,964	22,513	19,253	29,558
親会社株主に帰属する当期純利益 Profit attributable to owners of parent	Q1	4,810	3,936	3,162	3,471	3,657	5,908	5,129	3,357	2,956	6,376
	Q2	4,716	4,481	2,895	3,455	7,288	5,901	5,775	4,231	3,307	3,132
	Q3	7,736	6,000	4,802	4,658	7,357	6,772	6,849	7,777	6,000	6,473
	Q4	775	1,366	-272	-146	1,900	536	-779	186	832	4,244
	Full Year	18,038	15,784	10,588	11,439	20,204	19,118	16,975	15,553	13,097	20,225
EBITDA ¹⁾	Q1	6,979	7,592	5,917	7,863	8,059	10,889	10,551	8,782	7,195	12,703
	Q2	8,030	8,151	7,097	7,739	10,583	10,406	11,521	9,846	8,057	7,428
	Q3	11,282	9,685	10,383	10,818	13,910	13,001	12,751	13,958	12,020	12,356
	Q4	5,573	5,883	3,184	3,844	5,809	5,457	3,496	5,977	5,903	10,394
	Full Year	31,865	31,312	26,583	30,266	38,362	39,754	38,321	38,565	33,176	42,883

¹⁾ EBITDA = 営業利益 ± その他収支 + 償却額 (のれん償却含む) 2016年度Q1~2018年度Q1はその他収支の一部を除いて算出しています

¹⁾ EBITDA = Operating profit ± Equity in earnings (losses) of affiliates and other income (expenses) + Amortization (including goodwill amortization)

Calculations for Q1 of fiscal year 2016 to Q1 of fiscal year 2018 exclude certain items of other income and expenses.

²⁾ 2021年度より「収益認識に関する会計基準」等を適用しています。 The Accounting Standard for Revenue Recognition is applied from the beginning of FY2021.

³⁾ アンズコフーズ社の決算期変更に伴い、Q1期間における当該子会社の会計期間は6か月間 (2025年1-6月) となります。

なお、当該子会社の2025年1月1日から2025年3月31日の売上高は、40,580百万円、営業利益は1,300百万円、経常利益は1,105百万円、税金等調整前四半期純利益は1,104百万円です。

Due to the change in Anzuko Foods' fiscal year, the accounting period for the subsidiary during Q1 will be six months (January to June 2025).

Incidentally, ANZCO FOODS LIMITED and its subsidiaries sales from January 1, 2025 to March 31, 2025 were 40,580 million yen,

operating profit was 1,300 million yen, ordinary profit was 1,105 million yen, and quarterly net profit before taxes was 1,104 million yen.

(3) 連結キャッシュフロー計算書 Consolidated Statements of Cash Flows

		百万円 Million yen									
		FY2016	FY2017	FY2018	FY2019	FY2020	FY2021	FY2022	FY2023	FY2024	FY2025
営業活動によるキャッシュフロー Cash flows from operating activities	Q1	205	-6,763	445	1,763	2,785	716	-1,948	-392	-4,621	4,817
	Q2	5,304	-3,549	-9,806	9,206	11,432	-10,421	-15,239	-4,544	-4,567	8,018
	Q3	-6,466	-2,318	4,492	-2,929	121	771	-2,676	4,277	-3,966	-20,954
	Q4	22,143	18,152	19,982	23,806	26,523	27,406	23,811	30,051	23,172	21,781
	Full Year	21,187	5,521	15,114	31,847	40,862	18,473	3,947	29,392	10,016	13,663
投資活動によるキャッシュフロー Cash flows from investing activities	Q1	-1,527	-2,326	-2,064	463	-2,713	-2,134	-3,165	-2,617	-5,592	-6,604
	Q2	-1,349	-3,553	-3,973	-2,649	-3,507	-3,298	-11,552	-6,229	-2,436	-3,465
	Q3	-2,339	-1,490	-9,454	-2,791	-2,480	-2,805	-4,385	-3,894	-8,713	-9,657
	Q4	-3,539	-812	-4,387	-2,878	-2,135	-3,012	-3,823	-3,273	-3,898	-6,285
	Full Year	-8,756	-8,183	-19,879	-7,855	-10,837	-11,251	-22,926	-16,014	-20,642	-26,013
財務活動によるキャッシュフロー Cash flows from financing activities	Q1	3,867	-10,283	50	-4,150	-4,243	-3,501	-7,752	4,173	10,408	824
	Q2	-3,388	59	4,963	-6,398	-6,210	-3,277	11,619	11,729	3,604	-6,957
	Q3	-9,925	-5,853	1,492	-9,192	-15,522	-7,088	9,365	-2,599	11,077	34,189
	Q4	449	-3,926	3,578	3,350	4,879	3,213	-20,076	-26,581	-17,622	-19,533
	Full Year	-8,996	-20,004	10,084	-16,390	-21,097	-10,653	-6,844	-13,278	7,468	8,523
現金及び現金同等物の期末残高 Cash and cash equivalents at end of period	Q1	51,347	33,166	28,346	32,844	37,196	46,090	35,012	23,597	23,553	19,225
	Q2	51,601	25,919	20,143	32,528	39,058	29,051	20,359	24,882	20,419	17,162
	Q3	32,757	16,103	16,254	17,874	21,191	19,906	22,882	22,843	18,294	21,198
	Q4	52,785	29,284	34,643	41,771	50,651	47,690	22,359	22,917	20,581	17,572
	Full Year	182,489	134,468	139,387	124,087	137,136	136,743	125,510	111,821	103,755	96,162
フリーキャッシュフロー ^{*1} Free cash flows ^{*1}	Q1	-1,322	-9,090	-1,619	2,227	71	-1,418	-5,114	-3,009	-10,214	-1,786
	Q2	3,954	-7,103	-13,779	6,557	7,925	-13,720	-26,791	-10,773	-7,004	4,553
	Q3	-8,806	-3,808	-4,961	-5,721	-2,358	-2,033	-7,061	383	-12,680	-30,611
	Q4	18,604	17,339	15,594	20,928	24,387	24,394	19,988	26,778	19,274	15,496
	Full Year	12,430	-2,661	-4,765	23,991	30,025	7,221	-18,979	13,378	-10,625	-12,349

*1 フリーキャッシュフロー = 営業活動によるキャッシュフロー + 投資活動によるキャッシュフロー

Free cash flows = Cash flows from operating activities + Cash flows from investing activities

(4) 設備投資額・減価償却費・研究開発費 Capital investment, Depreciation, R&D expenditures

		百万円 Million yen									
		FY2016	FY2017	FY2018	FY2019	FY2020	FY2021 ^{*2}	FY2022 ^{*2*3}	FY2023 ^{*2*3}	FY2024 ^{*2*3}	FY2025 ^{*2*3}
設備投資額 ^{*1} Capital expenditures ^{*1}	Q1	—	—	—	1,914	2,085	2,518	3,801	4,078	2,795	3,921
	Q2	—	—	—	3,126	2,963	2,633	5,397	3,193	3,458	5,665
	Q3	—	—	—	1,757	2,508	2,470	2,879	4,774	10,129	10,505
	Q4	—	—	—	3,041	4,024	4,078	5,348	7,261	5,354	8,482
	Full Year	13,106	12,674	20,560	9,838	11,580	11,699	17,425	19,306	21,736	28,573
加工食品事業 Processed food division	Full Year	8,425	7,397	13,026	5,821	6,182	6,000	9,503	8,436	15,641	20,072
食肉事業 Meat division	Full Year	4,010	4,738	6,770	3,434	4,301	5,075	7,168	10,251	5,763	7,529
その他 / 調整額 Others / Adjustments	Full Year	671	537	762	582	1,095	623	753	619	332	972
減価償却費及びのれん償却額 ^{*1} Depreciation and amortization ^{*1}	Q1	2,508	2,271	2,346	2,965	2,953	2,987	3,042	3,250	3,533	4,157
	Q2	2,288	2,324	2,831	3,075	3,023	3,102	3,368	3,412	3,664	3,498
	Q3	2,394	2,417	3,340	3,217	3,101	3,265	3,456	3,524	3,727	3,690
	Q4	3,735	3,172	3,057	3,178	3,782	3,417	3,721	3,820	3,632	3,894
	Full Year	10,927	10,186	11,576	12,437	12,860	12,773	13,589	14,007	14,558	15,241
加工食品事業 Process Food division	Full Year	6,047	5,928	7,162	7,191	6,937	6,812	6,868	6,829	7,046	7,105
食肉事業 Meat division	Full Year	3,160	2,606	2,770	3,599	4,253	4,262	5,034	5,296	5,506	6,105
その他 / 調整額 Others / Adjustments	Full Year	1,718	1,651	1,642	1,646	1,668	1,699	1,686	1,879	2,006	2,029
研究開発費 R&D expenditures	Full Year	1,797	1,791	1,822	1,630	1,522	1,525	1,704	1,648	1,644	1,564
売上高研究開発費率 (%) R&D Expenditures / Net sales ratio	Full Year	0.2	0.2	0.2	0.2	0.2	0.2	0.2	0.2	0.2	0.1

*1 設備投資額、減価償却費及びのれん償却額は、無形固定資産も含んだ数値です。

The figures of "Capital expenditures" and "Depreciation and amortization" include "Intangible assets".

*2 2021年度より「収益認識に関する会計基準」等を適用しています。

The Accounting Standard for Revenue Recognition is applied from the beginning of FY2021.

*3 当社グループの組織変更に伴い、2022年度より報告セグメントを製品・サービス別から組織別に変更しています。

Since the beginning of FY2022, the group's reportable segments have changed from product and service-based to organization-based in response to the group's organizational restructuring.

(1) 収益性 Profitability

	FY2016	FY2017	FY2018	FY2019	FY2020	FY2021 ⁴	FY2022 ⁴	FY2023 ⁴	FY2024 ⁴	FY2025 ⁴	%
売上高総利益率 Gross profit ratio	16.2	15.7	14.9	15.7	16.6	15.4	14.1	13.9	13.5	13.7	
売上高営業利益率 Operating profit ratio	2.7	2.6	1.7	2.0	2.9	2.9	2.5	2.3	2.0	2.7	
売上高経常利益率 Ordinary profit ratio	3.1	2.9	1.8	2.3	3.2	3.3	2.8	2.7	2.1	2.8	
売上高当期純利益率 Return on sales	2.3	1.9	1.2	1.3	2.4	2.2	1.8	1.6	1.3	1.9	
売上高販管費率 SG&A expenses ratio	13.5	13.1	13.2	13.6	13.8	12.6	11.6	11.5	11.5	11.0	
EBITDAマージン EBITDA margin	4.0	3.8	3.1	3.6	4.6	4.7	4.2	4.0	3.4	3.9	

(2) リターン Return

	FY2016	FY2017	FY2018	FY2019	FY2020	FY2021	FY2022	FY2023	FY2024	FY2025	%
自己資本当期純利益率 ^{*1} Return on equity (ROE) ^{*1}	8.8	7.3	4.8	5.1	8.5	7.5	6.4	5.6	4.6	7.0	
総資産経常利益率 ^{*2} Ordinary profit / Total assets (ROA) ^{*2}	6.8	6.5	4.1	5.0	6.9	7.1	6.1	5.8	4.5	6.1	
投下資本利益率 ^{*3} Return on invested capital (ROIC) ^{*3}	9.9	7.1	4.6	4.9	8.4	7.6	6.3	5.6	4.6	6.2	

*1 自己資本当期純利益率 = 親会社株主に帰属する当期純利益 / 期首・期末平均自己資本

Return on equity = Profit attributable to owners of parent / Average Equity capital

*2 総資産経常利益率 = 経常利益 / 期首・期末平均総資産

Ordinary profit to total assets = Ordinary profit / Average net assets

*3 投下資本利益率 = 利払前税引後利益 / 期首・期末平均ネット有利子負債 + 期首・期末平均純資産

Return on invested capital = Profit before interest expenses and after taxes / (Average net interest-bearing debt + Average net assets)

*4 2021年度より「収益認識に関する会計基準」等を適用しています。

The Accounting Standard for Revenue Recognition is applied from the beginning of FY2021.

(3) 効率性 Efficiency

	FY2016	FY2017	FY2018	FY2019	FY2020	FY2021 ⁵	FY2022 ⁵	FY2023 ⁵	FY2024 ^{5/6}	FY2025 ^{5/6}
従業員一人当たり売上高 (百万円) ^{*1} Net sales per employee (Million yen) ^{*1}	103	106	104	102	101	105	115	117	142	157
総資産回転率 (回) ^{*2} Total assets turnover (Times) ^{*2}	2.16	2.21	2.20	2.18	2.15	2.12	2.17	2.13	2.13	2.16
棚卸資産回転率 (回) ^{*3} Inventories turnover (Times) ^{*3}	10.79	10.26	9.71	9.52	9.77	9.61	8.45	7.70	7.36	6.79
棚卸資産回転日数 (日) ^{*4} Inventories turnover (Days) ^{*4}	33.81	35.59	37.58	38.35	37.35	37.98	43.18	47.40	49.62	53.74

*1 従業員一人当たり売上高 = 売上高 / 期末従業員総数

Net sales per employee = Net sales / Number of employees at end of period

*2 総資産回転率 = 売上高 / 期首・期末平均総資産

Total assets turnover = Net sales / Average Total assets

*3 棚卸資産回転率 = 売上高 / 期首・期末平均棚卸資産

Inventories turnover (Times) = Net sales / Average Inventories

*4 棚卸資産回転日数 = 365 / 棚卸資産回転率

Inventories turnover (Days) = 365 / Inventories turnover (Times)

*5 2021年度より「収益認識に関する会計基準」等を適用しています。

The Accounting Standard for Revenue Recognition is applied from the beginning of FY2021.

*6 2024年度より従業員数の集計方法見直し後の数値にて算出しています。

Calculated using the revised employee headcount methodology from FY2024.

(4) 安全性および流動性 Stability and Liquidity

	FY2016	FY2017	FY2018	FY2019	FY2020	FY2021	FY2022	FY2023	FY2024	FY2025
自己資本比率 (%) Shareholders' equity ratio	56.9	57.7	56.6	58.5	62.7	63.4	61.5	61.5	61.1	56.2
流動比率 (%) Current ratio	177.5	169.6	164.6	164.0	184.0	192.4	167.7	168.7	191.9	171.7
固定比率 (%) Fixed ratio	74.5	74.1	73.5	71.5	67.9	64.8	67.1	66.9	66.5	72.4
固定長期適合率 (%) Fixed assets to fixed liability ratio	64.7	64.9	64.8	65.2	62.0	59.4	63.7	63.4	59.0	62.3
有利子負債・株主資本比率 (倍) ^{*1} Interest-bearing dept / Equity ratio (Times) ^{*1}	0.25	0.22	0.28	0.23	0.16	0.15	0.18	0.16	0.23	0.34
キャッシュフロー・有利子負債比率 (%) ^{*2} Cash flows / Interest-bearing dept ratio ^{*2}	40.1	11.5	24.3	60.1	103.2	48.8	8.6	67.8	16.0	14.8
インタレスト・カバレッジ・レシオ (倍) ^{*3} Interest coverage ratio (Times) ^{*3}	22.5	6.2	19.2	44.7	113.3	57.9	4.9	16.2	4.4	5.8

*1 有利子負債・株主資本比率 = 有利子負債 / 株主資本

Interest-bearing dept / Equity ratio = Interest-bearing dept / Shareholder's equity

*2 キャッシュフロー・有利子負債比率 = 営業活動によるキャッシュフロー / 有利子負債

Cash Flows / Interest-bearing dept ratio = Cash flows from operating activities / Interest-bearing dept

*3 インタレスト・カバレッジ・レシオ = 営業活動によるキャッシュフロー / 利払い

Interest coverage ratio = Cash flows from operating activities / Interest paid

(5) 投資 Investment

	FY2016 ^{*8}	FY2017 ^{*8}	FY2018 ^{*8}	FY2019 ^{*8}	FY2020 ^{*8}	FY2021 ^{*8}	FY2022 ^{*8}	FY2023	FY2024	FY2025
1株当たり当期純利益 (円) ^{*1} Profit per share (Yen) ^{*1}	303.34	266.12	179.11	193.60	343.03	326.72	294.07	273.24	230.88	356.43
1株当たり純資産 (円) ^{*2} Net assets per share (YEN) ^{*2}	3,573.68	3,698.83	3,770.71	3,866.31	4,217.61	4,488.29	4,717.02	5,018.37	5,033.02	5,193.66
1株当たりキャッシュフロー (円) ^{*3} Cash flows per share (Yen) ^{*3}	487.08	439.41	375.17	405.29	564.74	546.28	536.73	521.21	487.46	596.68
1株当たり配当金 (円) Cash dividends per share (Yen)	85.00	85.00	85.00	85.00	105.00	115.00	120.00	125.00	145.00	145.00
株価収益率 (倍) ^{*4} PER (Times) ^{*4}	17.1	17.4	19.2	16.5	10.6	9.9	11.9	14.7	18.1	0.0
株価純資産倍率 (倍) ^{*5} PBR (Times) ^{*5}	1.5	1.3	0.9	0.8	0.9	0.7	0.7	0.8	0.8	0.0
株価キャッシュフロー倍率 (倍) ^{*6} PCFR (Times) ^{*6}	10.7	10.5	9.2	7.9	6.5	5.9	6.5	7.7	8.6	0.0
配当性向 (%) Payout ratio	28.0	31.9	47.5	43.9	30.6	35.2	40.8	45.7	62.8	40.7
株主資本配当率 (%) ^{*7} Dividend on equity ratio (DOE) (%) ^{*7}	2.5	2.4	2.3	2.3	2.6	2.7	2.7	2.7	3.1	3.1

*1 1株当たり当期純利益 = 親会社株主に帰属する当期純利益 / 期中平均株式数

Profit per share = Profit attributable to owners of parent / Average number of shares outstanding during period

*2 1株当たり純資産 = (純資産合計 - 新株予約権 - 非支配株主持分) / (発行済株式数 - 自己株式数)

Net assets per share = (Total net assets - Share acquisition rights - Non-controlling interests) / (Number of shares outstanding - Number of treasury stock)

*3 1株当たりキャッシュフロー = (親会社株主に帰属する当期純利益 + 減価償却費 + のれん償却額) / (発行済株式数 - 自己株式数)

Cash flows per share = (Profit attributable to owners of parent + Depreciation and Amortization) / (Number of shares outstanding - Number of treasury stock)

*4 株価収益率 = 期末株価終値 / 1株当たり当期純利益

PER = Year-end stock price / Profit per share

*5 株価純資産倍率 = 期末株価終値 / 1株当たり純資産

PBR = Year-end stock price / Net assets per share

*6 株価キャッシュフロー倍率 = 期末株価終値 / 1株当たりキャッシュフロー

PCFR = Year-end stock price / Cash flows per share

*7 株主資本配当率 = 配当金総額 / 期首・期末平均株主資本

DOE = Dividends / Average shareholders' equity

*8 2023年10月1日付で、株式併合（普通株式5株を1株に併合）を実施しました。

当ページの過年度数値は、2016年度期首に当該株式併合が行われたと仮定して算出しています。

As the effective date on October 1 2023, we have completed a share consolidation (combining 5 shares of common stock into 1 share).

In regard to the past years figures on this page, these show on the assumption of the share consolidation be carried out at the beginning of FY2016.

(1) 事業別売上高及び営業利益、経常利益 Net sales and Operating profit and Ordinary profit by division

百万円 Million yen

		FY2016	FY2017	FY2018	FY2019	FY2020	FY2021 ^{*1}	FY2022 ^{*1*2}	FY2023 ^{*1*2*3}	FY2024 ^{*1*2*3}	FY2025 ^{*1*2*3*4}
売上高 Net sales	Q1	196,532	201,879	208,615	210,964	204,992	202,607	212,325	227,558	235,771	297,110
	Q2	202,345	214,758	217,809	221,436	209,630	215,154	235,678	242,583	255,142	245,251
	Q3	213,533	226,295	232,611	228,500	232,204	237,945	253,592	258,078	267,567	277,654
	Q4	180,153	188,932	191,684	191,548	195,847	198,666	221,085	227,360	230,289	251,364
	Full Year	792,564	831,865	850,721	852,450	842,675	854,374	922,682	955,580	988,771	1,071,381
加工食品事業 Processed food division	Q1	65,796	67,172	68,912	70,663	73,488	72,525	87,792	93,852	96,865	100,290
	Q2	71,634	72,957	73,649	75,733	77,143	75,732	92,005	96,664	100,568	98,333
	Q3	82,568	84,547	85,893	86,208	88,729	86,529	106,166	111,595	113,287	111,093
	Q4	61,405	62,825	63,483	67,604	67,680	67,522	85,201	89,223	90,152	88,835
	Full Year	281,404	287,502	291,939	300,209	307,041	302,309	371,165	391,336	400,872	398,553
食肉事業 Meat division	Q1	130,699	133,677	138,666	139,250	130,508	129,016	123,416	133,702	138,902	196,817
	Q2	130,678	140,745	143,113	144,673	131,490	138,393	142,602	145,914	154,570	146,914
	Q3	130,952	140,625	145,592	141,254	142,392	150,295	146,260	146,477	154,276	166,556
	Q4	118,737	125,059	127,204	123,006	127,190	130,138	134,866	138,132	140,134	162,525
	Full Year	511,067	540,107	554,576	548,184	531,581	547,843	547,145	564,227	587,883	672,814
その他・調整額 Others	Q1	36	1,029	1,036	1,050	995	1,066	1,117	3	4	3
	Q2	33	1,055	1,046	1,028	996	1,029	1,070	3	3	3
	Q3	12	1,122	1,125	1,038	1,082	1,120	1,165	5	4	4
	Q4	10	1,047	996	937	977	1,006	1,017	3	3	3
	Full Year	93	4,255	4,206	4,055	4,052	4,221	4,371	15	15	14
営業利益 Operating profit	Q1	4,526	5,394	3,654	4,772	5,028	7,554	7,114	5,311	3,929	9,112
	Q2	5,986	6,039	4,294	4,598	7,597	6,925	8,023	5,268	4,877	4,037
	Q3	8,937	7,268	6,824	7,307	9,546	8,655	8,778	10,147	8,366	8,642
	Q4	2,006	2,859	-279	587	1,845	1,476	-923	1,608	2,403	6,663
	Full Year	21,455	21,562	14,494	17,266	24,018	24,611	22,994	22,336	19,576	28,456
加工食品事業 Processed food division	Q1	2,835	2,964	2,136	1,889	2,737	3,614	2,741	1,559	1,995	2,107
	Q2	3,229	2,935	1,509	1,788	3,085	2,895	1,623	1,850	1,610	1,549
	Q3	5,381	5,114	4,569	4,182	5,640	4,380	3,459	4,857	4,775	4,150
	Q4	88	-250	-300	-1,130	933	195	-2,193	405	789	1,067
	Full Year	11,536	10,764	7,914	6,730	12,397	11,086	5,631	8,672	9,170	8,875
食肉事業 Meat division	Q1	1,998	2,727	1,817	3,199	2,806	4,384	4,900	4,338	2,528	7,512
	Q2	3,074	3,174	2,898	2,904	4,839	4,217	6,701	3,760	3,689	2,880
	Q3	3,732	2,092	2,334	3,079	4,211	4,420	5,576	5,565	3,927	4,901
	Q4	2,039	3,437	314	2,100	1,585	1,838	1,936	1,565	1,949	6,085
	Full Year	10,844	11,432	7,364	11,284	13,443	14,860	19,114	15,230	12,095	21,380
その他・調整額 Others	Q1	-307	-297	-298	-316	-515	-444	-527	-586	-593	-507
	Q2	-317	-70	-113	-94	-328	-187	-301	-342	-423	-391
	Q3	-176	61	-79	45	-305	-145	-257	-275	-336	-410
	Q4	-122	-327	-292	-382	-672	-557	-666	-362	-335	-489
	Full Year	-924	-634	-784	-748	-1,822	-1,335	-1,752	-1,566	-1,688	-1,799
経常利益 Ordinary profit	Q1	5,116	5,830	4,124	5,225	5,516	8,425	7,698	5,600	4,369	9,161
	Q2	6,840	6,721	4,481	5,070	8,028	8,115	8,462	6,697	4,668	4,475
	Q3	10,592	8,000	7,239	8,271	10,617	10,255	9,850	11,103	8,955	9,726
	Q4	2,335	3,871	-165	966	2,838	1,799	32	2,634	2,758	7,031
	Full Year	24,884	24,423	15,679	19,534	27,000	28,596	26,044	26,036	20,750	30,395
加工食品事業 Processed food division	Q1	-	-	-	-	-	-	2,828	1,598	2,156	2,248
	Q2	-	-	-	-	-	-	1,749	1,912	1,772	1,640
	Q3	-	-	-	-	-	-	3,678	4,984	4,907	4,297
	Q4	-	-	-	-	-	-	-2,301	556	938	1,223
	Full Year	-	-	-	-	-	-	5,954	9,051	9,775	9,410
食肉事業 Meat division	Q1	-	-	-	-	-	-	5,255	4,332	2,582	7,266
	Q2	-	-	-	-	-	-	6,994	5,217	3,267	3,213
	Q3	-	-	-	-	-	-	6,277	6,206	4,198	5,742
	Q4	-	-	-	-	-	-	2,937	2,375	2,167	6,401
	Full Year	-	-	-	-	-	-	21,465	18,131	12,215	22,624
その他・調整額 Others	Q1	-	-	-	-	-	-	-385	-329	-370	-354
	Q2	-	-	-	-	-	-	-281	-431	-371	-377
	Q3	-	-	-	-	-	-	-106	-87	-150	-313
	Q4	-	-	-	-	-	-	-603	-298	-348	-593
	Full Year	-	-	-	-	-	-	-1,375	-1,147	-1,240	-1,639

*1 2021年度より「収益認識に関する会計基準」等を適用しています。

The Accounting Standard for Revenue Recognition is applied from the beginning of FY2021.

*2 当社グループの組織変更に伴い、2022年度より報告セグメントを製品・サービス別から組織別に変更しています。

Since the beginning of FY2022, the group's reportable segments have changed from product and service-based to organization-based in response to the group's organizational restructuring.

*3 2023年度より物流事業を「その他」から加工食品事業及び食肉事業それぞれのセグメントに含めて表示することに変更しています。

Since the beginning of FY2023, the segment of logistics business have changed from "Other" to "Processed Food Division" and "Meat Division".

*4 アンズコフーズ社の決算期変更に伴い、Q1期間における当該子会社の会計期間は6か月間（2025年1-6月）となります。

Due to the change in Anzuko Foods' fiscal year, the accounting period for the subsidiary during Q1 will be six months (January to June 2025).

(2) 商品別売上高 Net sales by products

		FY2016	FY2017	FY2018	FY2019	FY2020	FY2021 ^{*1}	FY2022 ^{*1}	FY2023 ^{*1}	FY2024 ^{*1}	FY2025 ^{*1,2}
		百万円 Million yen									
売上高 Net sales	Q1	196,532	201,879	208,615	210,964	204,992	202,607	212,325	227,558	235,771	297,110
	Q2	202,345	214,758	217,809	221,436	209,630	215,154	235,678	242,583	255,142	245,251
	Q3	213,533	226,295	232,611	228,500	232,204	237,945	253,592	258,078	267,567	277,654
	Q4	180,153	188,932	191,684	191,548	195,847	198,666	221,085	227,360	230,289	251,364
	Full Year	792,564	831,865	850,721	852,450	842,675	854,374	922,682	955,580	988,771	1,071,381
ハム・ソーセージ Ham & Sausage	Q1	40,798	41,821	40,898	42,400	42,827	41,782	42,389	44,601	45,014	47,568
	Q2	44,396	45,308	44,829	46,161	45,153	43,851	45,482	45,867	46,911	47,671
	Q3	51,706	53,297	53,563	52,128	52,108	50,390	53,474	52,241	54,634	52,293
	Q4	35,960	36,502	35,537	38,617	37,529	37,852	38,168	40,879	41,027	39,988
	Full Year	172,861	176,931	174,828	179,308	177,618	173,877	179,514	183,589	187,588	187,522
調理加工食品 Processed food	Q1	28,273	29,679	32,466	33,061	35,281	35,377	34,875	37,801	38,943	42,146
	Q2	30,334	32,151	33,657	34,468	35,800	37,208	37,403	38,825	40,612	39,260
	Q3	34,267	36,716	38,400	39,419	41,789	41,544	43,186	43,171	44,806	45,924
	Q4	28,844	31,303	32,255	33,315	35,134	35,395	39,363	41,047	38,130	38,647
	Full Year	121,719	129,851	136,779	140,264	148,006	149,525	154,829	160,846	162,492	165,978
食肉 Meat	Q1	125,157	126,443	129,428	130,272	122,453	121,012	130,114	138,912	144,506	195,005
	Q2	122,394	133,577	132,439	135,348	125,518	128,695	145,777	149,327	159,146	150,891
	Q3	124,554	132,978	135,777	132,296	134,466	140,388	150,861	153,587	161,056	172,485
	Q4	111,449	117,622	119,340	114,897	118,297	119,895	134,505	136,993	144,030	164,561
	Full Year	483,555	510,622	516,986	512,814	500,735	509,991	561,259	578,821	608,740	682,944
牛肉 Beef	Q1	63,354	61,445	63,837	65,530	56,035	56,358	61,798	63,034	67,048	95,773
	Q2	63,792	66,764	69,030	67,505	61,443	61,352	68,518	69,829	74,819	66,949
	Q3	63,737	65,897	68,795	66,988	68,269	68,314	70,506	73,334	76,037	78,226
	Q4	52,935	55,790	58,267	54,543	54,605	54,174	58,400	61,675	63,982	72,317
	Full Year	243,819	249,898	259,930	254,567	240,353	240,200	259,223	267,873	281,887	313,267
豚肉 Pork	Q1	35,863	36,913	38,163	38,396	42,166	37,292	39,907	42,176	42,929	49,197
	Q2	36,344	40,603	37,683	40,609	40,503	39,717	42,605	46,044	50,433	48,737
	Q3	37,885	40,824	41,125	41,371	42,995	45,127	47,247	47,606	54,609	51,388
	Q4	35,539	36,970	37,679	37,945	39,447	38,388	43,901	44,454	45,537	46,265
	Full Year	145,633	155,312	154,652	158,323	165,112	160,525	173,661	180,282	193,509	195,588
鶏肉 Chicken	Q1	15,819	18,287	16,762	17,044	15,193	17,390	18,533	22,263	22,263	24,902
	Q2	14,623	17,180	14,181	15,520	14,732	17,177	19,284	20,575	21,874	24,289
	Q3	17,955	19,342	17,810	17,172	17,492	19,754	22,823	23,934	23,153	27,374
	Q4	15,746	15,722	14,944	14,905	15,619	17,967	20,400	20,957	22,350	26,852
	Full Year	64,145	70,533	63,698	64,643	63,038	72,289	81,041	87,750	89,642	103,418
羊肉・他 Lamb and other meat	Q1	10,122	9,796	10,665	9,298	9,057	9,970	9,875	11,417	12,265	25,132
	Q2	7,631	9,029	11,544	11,713	8,839	10,448	15,369	12,878	12,018	10,914
	Q3	4,975	6,914	8,045	6,762	5,709	7,191	10,283	8,713	7,256	15,497
	Q4	7,228	9,138	8,449	7,506	8,624	9,366	11,803	9,906	12,160	18,845
	Full Year	29,957	34,878	38,704	35,280	32,230	36,976	47,332	42,915	43,700	70,390
その他 Others	Q1	2,304	3,933	5,821	5,230	4,429	4,436	4,945	6,242	7,307	12,390
	Q2	5,221	3,721	6,882	5,457	3,158	5,400	7,015	8,562	8,471	7,428
	Q3	3,004	3,302	4,870	4,656	3,840	5,622	6,070	9,078	7,070	6,950
	Q4	3,897	3,503	4,552	4,717	4,886	5,522	9,048	8,440	7,099	8,166
	Full Year	14,428	14,461	22,127	20,062	16,314	20,980	27,078	32,323	29,949	34,936

*1 2021年度より「収益認識に関する会計基準」等を適用しています。

The Accounting Standard for Revenue Recognition is applied from the beginning of FY2021.

*2 アンズコフーズ社の決算期変更に伴い、Q1期間における当該子会社の会計期間は6か月間（2025年1-6月）となります。

Due to the change in Anzuko Foods' fiscal year, the accounting period for the subsidiary during Q1 will be six months (January to June 2025).

(3) 国・地域別売上高 Net sales by country and region

		百万円 Million yen									
		FY2016	FY2017	FY2018	FY2019	FY2020	FY2021 ^{*1}	FY2022 ^{*1}	FY2023 ^{*1}	FY2024 ^{*1}	FY2025 ^{*1,2}
売上高 Net sales	Q1	196,532	201,879	208,615	210,964	204,992	202,607	212,325	227,558	235,771	297,110
	Q2	202,345	214,758	217,809	221,436	209,630	215,154	235,678	242,583	255,142	245,251
	Q3	213,533	226,295	232,611	228,500	232,204	237,945	253,592	258,078	267,567	277,654
	Q4	180,153	188,932	191,684	191,548	195,847	198,666	221,085	227,360	230,289	251,364
	Full Year	792,564	831,865	850,721	852,450	842,675	854,374	922,682	955,580	988,771	1,071,381
日本 Japan	Q1	167,396	174,384	178,723	182,893	182,183	176,620	182,897	196,511	199,186	213,790
	Q2	174,524	185,750	186,011	190,630	187,076	184,651	193,314	202,727	213,115	209,682
	Q3	198,959	207,830	211,457	209,332	213,732	212,992	222,715	226,709	235,191	237,515
	Q4	160,240	165,960	167,754	169,654	173,325	171,632	186,946	191,278	192,391	197,746
	Full Year	701,120	733,926	743,947	752,510	756,318	745,897	785,874	817,226	839,884	858,735
海外 Overseas	Q1	29,136	27,494	29,891	28,070	22,808	25,987	29,428	31,046	36,585	83,320
	Q2	27,821	29,007	31,798	30,805	22,554	30,502	42,363	39,855	42,026	35,569
	Q3	14,573	18,464	21,154	19,168	18,472	24,952	30,876	31,369	32,376	40,138
	Q4	19,912	22,971	23,930	21,894	22,521	27,033	34,139	36,082	37,897	53,618
	Full Year	91,444	97,938	106,774	99,939	86,356	108,476	136,807	138,354	148,886	212,646
アジア Asia	Q1	7,057	8,002	9,536	10,468	7,104	9,826	9,857	10,134	9,442	16,818
	Q2	8,422	7,879	9,788	12,878	8,700	11,396	12,677	11,505	9,822	6,300
	Q3	3,681	4,993	6,746	7,776	5,198	8,490	9,992	9,279	5,970	9,394
	Q4	4,672	6,610	8,438	9,634	7,061	9,568	12,026	8,352	9,184	10,162
	Full Year	23,833	27,485	34,510	40,758	28,065	39,282	44,553	39,272	34,419	42,675
北米 North America	Q1	9,269	6,589	7,814	7,070	6,018	6,503	9,812	8,318	11,094	30,965
	Q2	7,895	9,146	9,818	6,243	6,219	8,788	14,007	12,885	14,575	11,798
	Q3	2,828	3,319	3,232	3,448	5,098	7,215	6,068	8,248	11,290	12,720
	Q4	3,137	5,044	5,702	3,269	5,415	6,513	5,073	9,273	11,769	20,912
	Full Year	23,130	24,100	26,568	20,031	22,753	29,021	34,961	38,726	48,730	76,397
オセアニア Oceania	Q1	5,773	6,881	7,216	6,080	5,157	6,294	5,729	8,134	8,505	18,087
	Q2	5,746	6,917	7,362	6,273	4,461	6,516	9,113	8,820	9,696	8,697
	Q3	4,683	6,124	6,399	5,097	5,571	5,838	9,100	8,143	7,636	10,468
	Q4	8,175	7,062	6,179	5,479	6,883	7,253	11,058	11,048	9,797	11,714
	Full Year	24,378	26,985	27,157	22,930	22,074	25,903	35,001	36,146	35,635	48,968
欧州 Europe	Q1	5,665	4,820	4,709	3,871	3,504	2,939	3,318	4,080	6,268	15,078
	Q2	4,580	4,272	4,193	5,058	2,619	3,196	5,456	6,185	6,758	8,111
	Q3	2,571	3,168	3,773	2,319	2,181	2,981	4,900	5,293	6,846	6,008
	Q4	2,902	3,079	2,793	2,322	2,491	2,908	5,420	5,343	5,818	9,557
	Full Year	15,719	15,340	15,469	13,572	10,797	12,025	19,095	20,902	25,692	38,755
その他 Others	Q1	1,370	1,201	614	579	1,022	423	711	378	1,274	2,369
	Q2	1,176	792	636	350	552	605	1,108	458	1,174	662
	Q3	810	858	1,001	527	421	426	814	405	633	1,547
	Q4	1,024	1,174	817	1,188	669	788	560	2,064	1,327	1,270
	Full Year	4,381	4,026	3,069	2,646	2,666	2,243	3,195	3,306	4,410	5,849
海外売上高比率 (%) Overseas sales ratio	Q1	14.8	13.6	14.3	13.3	11.1	12.8	13.9	13.6	15.5	28.0
	Q2	13.7	13.5	14.6	13.9	10.8	14.2	18.0	16.4	16.5	14.5
	Q3	6.8	8.2	9.1	8.4	8.0	10.5	12.2	12.2	12.1	14.5
	Q4	11.1	12.2	12.5	11.4	11.5	13.6	15.4	15.9	16.5	21.3
	Full Year	11.5	11.8	12.6	11.7	10.2	12.7	14.8	14.5	15.1	19.8

*1 2021年度より「収益認識に関する会計基準」等を適用しています。

The Accounting Standard for Revenue Recognition is applied from the beginning of FY2021.

*2 アンズコフーズ社の決算期変更に伴い、Q1期間における当該子会社の会計期間は6か月間（2025年1-6月）となります。

Due to the change in Anzuko Foods' fiscal year, the accounting period for the subsidiary during Q1 will be six months (January to June 2025).

(1) 株式概況 Stock Overview

発行済株式総数 (株) ^{*1}	57,471,011
Number of shares outstanding (share) ^{*1}	
株主数 (名) ^{*1}	73,725
Number of shareholders (person) ^{*1}	

*1 自己株式を含む Including treasury stock

(2) 大株主 Major shareholders

	所有株式数 (千株) Holding (thousand shares)	所有株式数の割合 Shareholding ratio (%) ^{*1}
三菱商事株式会社 Mitsubishi Corporation	23,155	40.80
日本マスタートラスト信託銀行株式会社 (信託口) The Master Trust Bank of Japan, Ltd. (Trust account)	3,816	6.72
公益財団法人伊藤記念財団 The Ito Foundation	2,400	4.22
エス企画株式会社 S Planning Inc.	1,264	2.22
公益財団法人伊藤文化財団 Ito Bunka Foundation	1,240	2.18
株式会社日本カストディ銀行 (信託口) Custody Bank of Japan, Ltd. (Trust account)	1,168	2.05
伊藤 功一 Koichi Ito	552	0.97
STATE STREET BANK AND TRUST COMPANY 505103	552	0.97
日本生命保険相互会社 Nippon Life Insurance Company	549	0.96
STATE STREET BANK AND TRUST COMPANY 505001	495	0.87

*1 自己株式を除く Excluding treasury stock

(3) 株式分布 Stock distribution

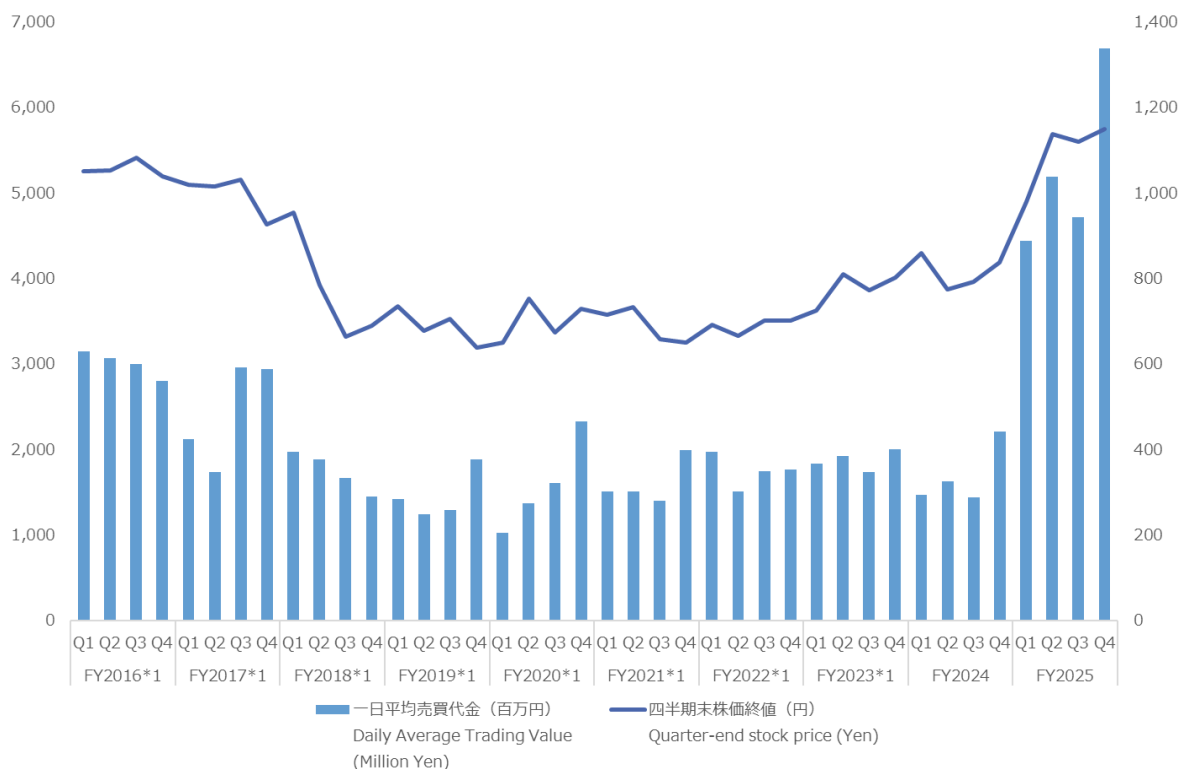
	金融機関 Financial institutions	金融商品 取引業者 Securities firms	その他の 法人 Other companies	外国法人等 Foreign investors	個人 その他 Individual / Others	自己株式 Treasury stock	合計 Total
株主数 (名) Shareholders (persons)	21	35	400	335	72,933	1	73,725
所有株式数 (千株) Holding (thousand shares)	5,620	988	29,758	5,634	14,429	720	57,471
所有株式数の割合 (%) Shareholding ratio (%)	9.77	1.72	51.77	9.36	25.10	1.25	100.00

	100株未満 Less than 100	100株以上 100 or more	1千株以上 1,000 or more	1万株以上 10,000 or more	10万株以上 100,000 or more	50万株以上 500,000 or more	合計 Total
株主数 (名) ^{*1} Shareholders (persons) ^{*1}	24,573	47,557	1,429	137	19	10	73,725
所有株式数 (千株) ^{*1} Holding (thousand shares) ^{*1}	319	10,575	2,759	3,901	4,494	35,419	57,471
所有株式数の割合 (%) ^{*1} Shareholding ratio (%) ^{*1}	0.55	18.40	4.80	6.78	7.82	61.63	100.00

*1 自己株式を含む Including treasury stock

(4) 株価および出来高 Stock price and trading volume

		FY2016 ^{*1}	FY2017 ^{*1}	FY2018 ^{*1}	FY2019 ^{*1}	FY2020 ^{*1}	FY2021 ^{*1}	FY2022 ^{*1}	FY2023 ^{*1}	FY2024	FY2025	
株価 (円) Stock Price (Yen)	Q1	高値 High	5,595	5,375	5,220	3,815	3,360	3,750	3,485	3,840	4,370	5,050
		安値 Low	4,550	5,035	4,935	3,355	3,140	3,525	3,235	3,500	4,080	4,820
	Q2	高値 High	5,495	5,245	4,770	3,750	3,930	3,890	3,495	4,230	4,490	5,880
		安値 Low	4,875	5,000	4,385	3,540	3,330	3,625	3,330	4,025	4,190	5,620
	Q3	高値 High	5,455	5,560	3,995	3,730	3,845	3,675	3,545	4,255	3,995	5,780
		安値 Low	4,910	5,070	3,525	3,515	3,485	3,440	3,340	3,905	3,780	5,570
	Q4	高値 High	5,715	5,315	3,615	3,680	3,890	3,535	3,710	4,290	4,285	6,480
		安値 Low	5,140	5,000	3,230	3,405	3,570	3,290	3,480	4,065	3,750	5,970
	Full Year	高値 High	5,715	5,560	5,220	3,815	3,930	3,890	3,710	4,290	4,490	6,480
		安値 Low	4,550	5,000	3,230	3,355	3,140	3,290	3,235	3,500	3,750	5,970
	四半期末株価終値 (円) Quarter-end stock price (yen)	Q1	5,255	5,095	4,765	3,670	3,245	3,575	3,455	3,620	4,295	4,900
		Q2	5,265	5,070	3,920	3,390	3,765	3,660	3,330	4,050	3,865	5,690
Q3		5,410	5,155	3,315	3,525	3,365	3,290	3,505	3,855	3,960	5,600	
Q4		5,190	4,625	3,445	3,185	3,645	3,245	3,500	4,010	4,185	5,740	
一日平均出来高 (千株) Daily Average Trading Volume (Thousand shares)	Q1	136	81	79	82	64	84	119	101	70	112	
	Q2	119	68	91	72	79	80	89	99	81	189	
	Q3	119	113	92	73	91	82	103	87	74	168	
	Q4	104	124	85	117	126	117	99	96	112	221	
	Full Year	120	96	87	86	90	91	102	96	84	191	
一日平均売買代金 (百万円) Daily Average Trading Value (Million Yen)	Q1	629	424	394	283	205	300	393	366	294	886	
	Q2	612	346	375	247	274	300	300	384	325	1,037	
	Q3	599	591	332	258	321	279	349	345	287	942	
	Q4	560	586	288	376	465	397	352	399	441	1,337	
	Full Year	600	486	348	290	316	318	349	373	334	1,046	

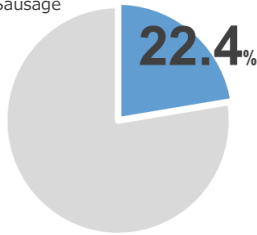


^{*1} 2023年10月1日を基準日として、普通株式5株を1株とする株式併合を実施しました。
 当ページの過年度数値は、2016年度期首に当該株式併合が行われたと仮定して算出しています。
 Effective October 1, 2023, the Company implemented a 1-for-5 share consolidation.
 Past figures have been retrospectively adjusted assuming the consolidation was effected at the beginning of FY2016.

(1) 主要商品国内市場シェア (2025年度) Market share of Main products in Japan (FY2025)

加工食品 Processed food

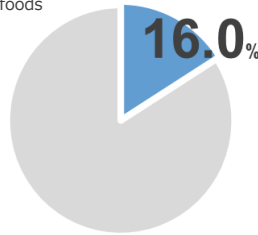
ハム・ソーセージ
Ham & Sausage



Data : QPR^{TM1}



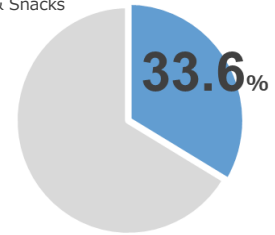
畜産調理
Cooked foods



Data : QPR^{TM1}



ピザ・スナック
Pizza & Snacks

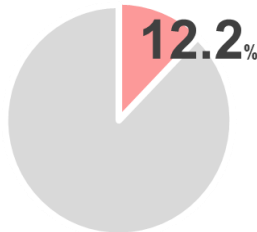


Data : QPR^{TM1}



食肉 Meat

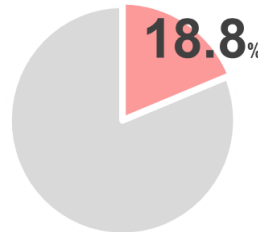
牛肉
Beef



当社調べ^{*2}
Our research^{*2}



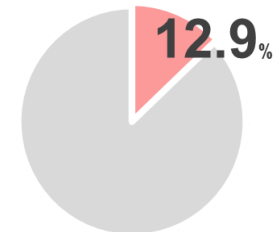
豚肉
Pork



当社調べ^{*2}
Our research^{*2}



鶏肉
Chicken



当社調べ^{*2}
Our research^{*2}



*1 15歳～79歳パネルデータ

These data panels target ages 15-79

*2 分母、分子ともに加工用仕向けを含む

Including meat for processing in both the denominator and numerator.